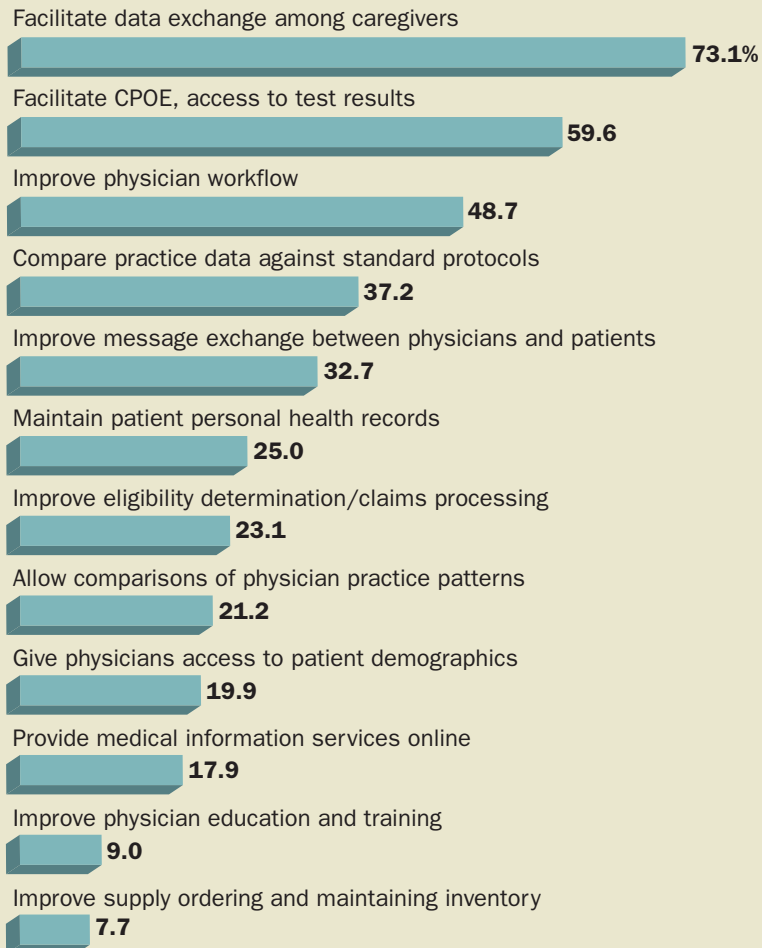


Modern Healthcare

2009 SURVEY OF EXECUTIVE OPINIONS ON KEY I.T. ISSUES

HOW CAN THE WEB AND RELATED TECHNOLOGIES HELP RESTRUCTURE THE HOSPITAL-PHYSICIAN RELATIONSHIP?

Percentage of respondents



Note: Respondents could select a maximum of four priorities.

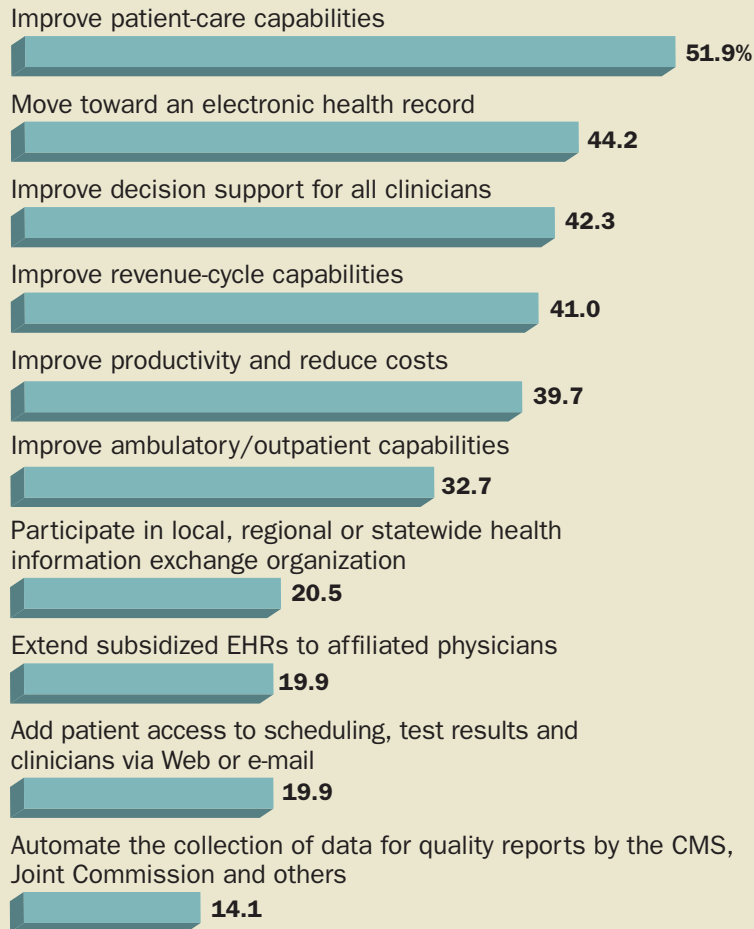
Source: Modern Healthcare/Modern Physician's 19th annual Survey of Executive Opinions on Key Information Technology Issues

Modern Healthcare

2009 SURVEY OF EXECUTIVE OPINIONS ON KEY I.T. ISSUES

TOP 10 I.T. SYSTEM PRIORITIES DURING THE NEXT 24 MONTHS

Percentage of respondents



Note: Respondents could select a maximum of four priorities.

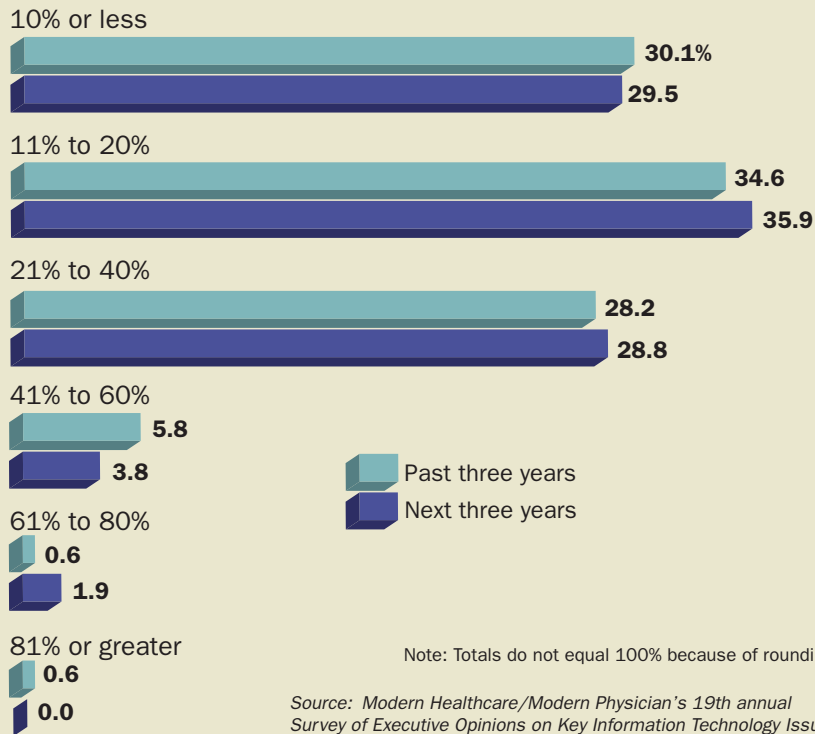
Source: Modern Healthcare/Modern Physician's 19th annual Survey of Executive Opinions on Key Information Technology Issues

Modern Healthcare

2009 SURVEY OF EXECUTIVE OPINIONS ON KEY I.T. ISSUES

PERCENTAGE OF CAPITAL BUDGET SPENT ON I.T. ASSETS

Percentage of respondents selecting each range



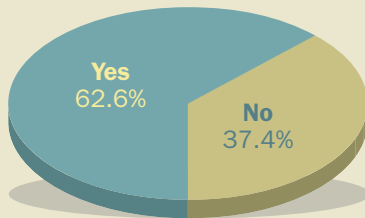
Modern Healthcare

2009 SURVEY OF EXECUTIVE OPINIONS ON KEY I.T. ISSUES

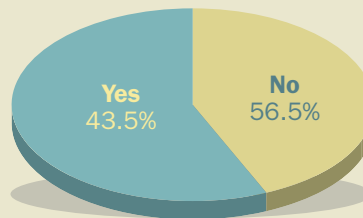
PLANS FOR COMPUTERIZED PHYSICIAN ORDER-ENTRY SYSTEMS

Percentage of respondents

Does your organization have such a system in operation or implementation?



If no, do you plan to contract for such a system within the year?



If not planning to acquire and install a system, what are the reasons?

Other capital spending is higher in priority



There is no money to pay for it at this time



Physicians and clinicians are resistant to using it in their network



There are other ways to monitor and alert physicians that are less expensive and disruptive



Not convinced that the time, trouble and expense are worth the anticipated benefit



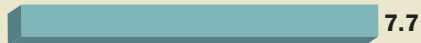
Demands of time and money for HIPAA compliance require postponement



Our organization is likely to merge with or become part of another organization within a year, and CPOE can't be considered until after that process



Other



Note: "Other" includes plans within two to five years; waiting for leadership consensus; and no need because of the type of organization.

Respondents could select all reasons that apply to their organizations.

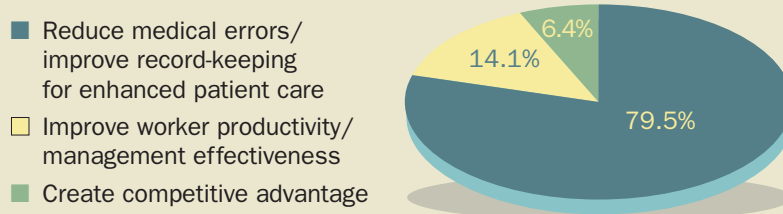
Source: Modern Healthcare/Modern Physician's 19th annual Survey of Executive Opinions on Key Information Technology Issues

Modern Healthcare

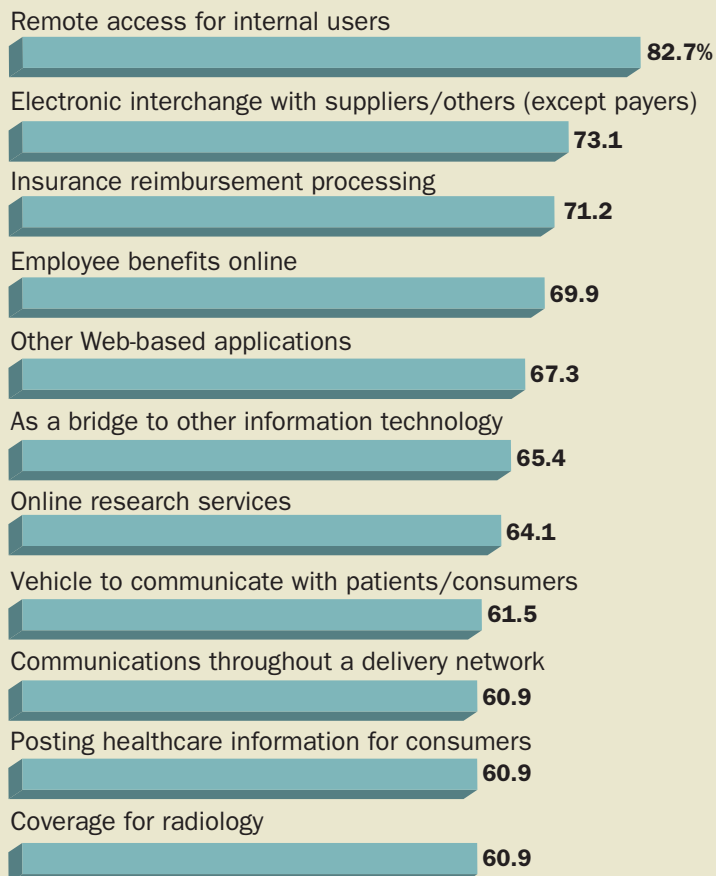
2009 SURVEY OF EXECUTIVE OPINIONS ON KEY I.T. ISSUES

PRIMARY BUSINESS RATIONALE FOR I.T. USE IN HEALTHCARE TODAY

Percentage of respondents



Top 10 ways Internet/Web is used:



Note: Respondents could select all reasons that apply to their organizations.

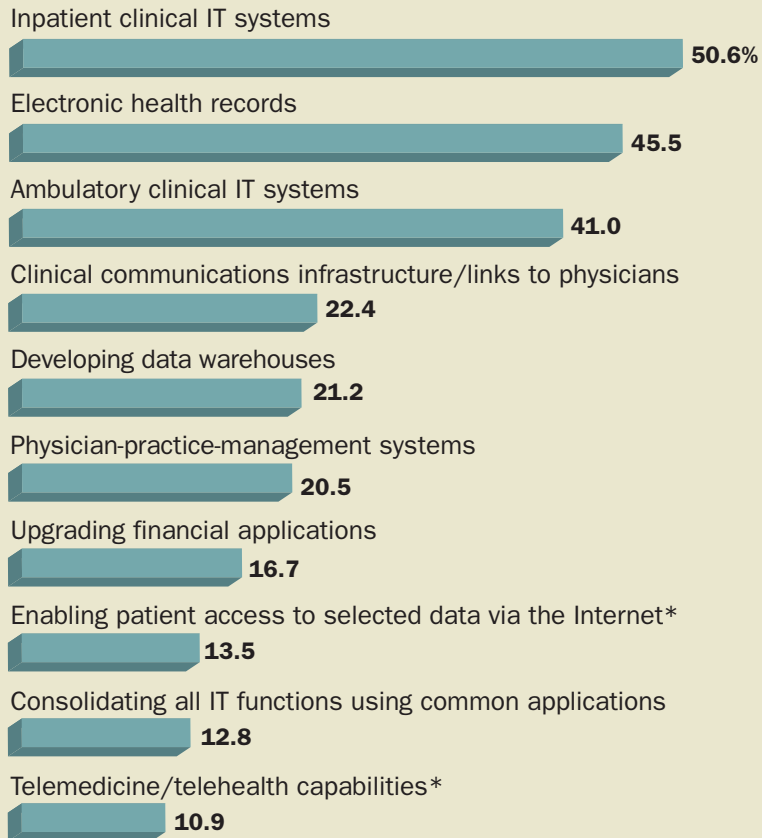
Source: Modern Healthcare/Modern Physician's 19th annual Survey of Executive Opinions on Key Information Technology Issues

Modern Healthcare

2009 SURVEY OF EXECUTIVE OPINIONS ON KEY I.T. ISSUES

WHAT'S HOT IN I.T. ...

by percentage of respondents



Note: Respondents could select a maximum of three issues. *Designates a Health 2.0 application.

Source: Modern Healthcare/Modern Physician's 19th annual Survey of Executive Opinions on Key Information Technology Issues

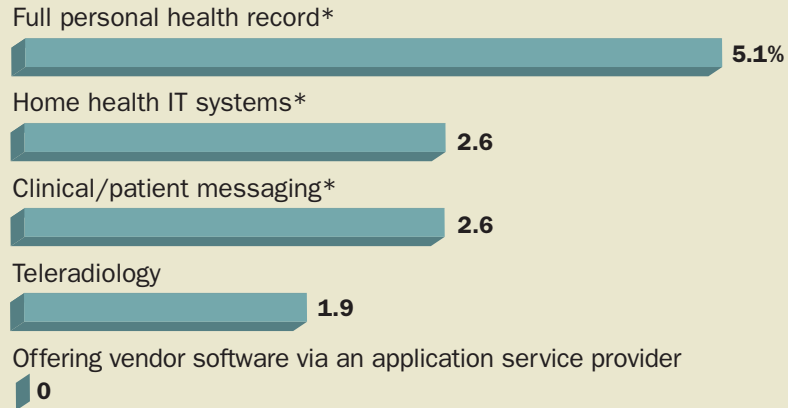
Modern Healthcare

2009 SURVEY OF EXECUTIVE OPINIONS ON KEY I.T. ISSUES

...AND WHAT'S NOT SO HOT IN I.T.

Health 2.0 applications crowd the field of least-selected “hot button” information technology priorities

Percentage of respondents



*Designates a Health 2.0 application

Source: Modern Healthcare/Modern Physician's 19th annual Survey of Executive Opinions on Key Information Technology Issues

Modern Healthcare

2009 SURVEY OF EXECUTIVE OPINIONS ON KEY I.T. ISSUES

SAYING YES TO I.T. STIMULUS

Percentage of respondents

Should government subsidize the cost of providing electronic health records systems to physicians?



Should government subsidize IT systems for hospitals and other healthcare organizations in rural and medically underserved areas?



Should government subsidize IT programs at community hospitals and other healthcare organizations?



Yes No

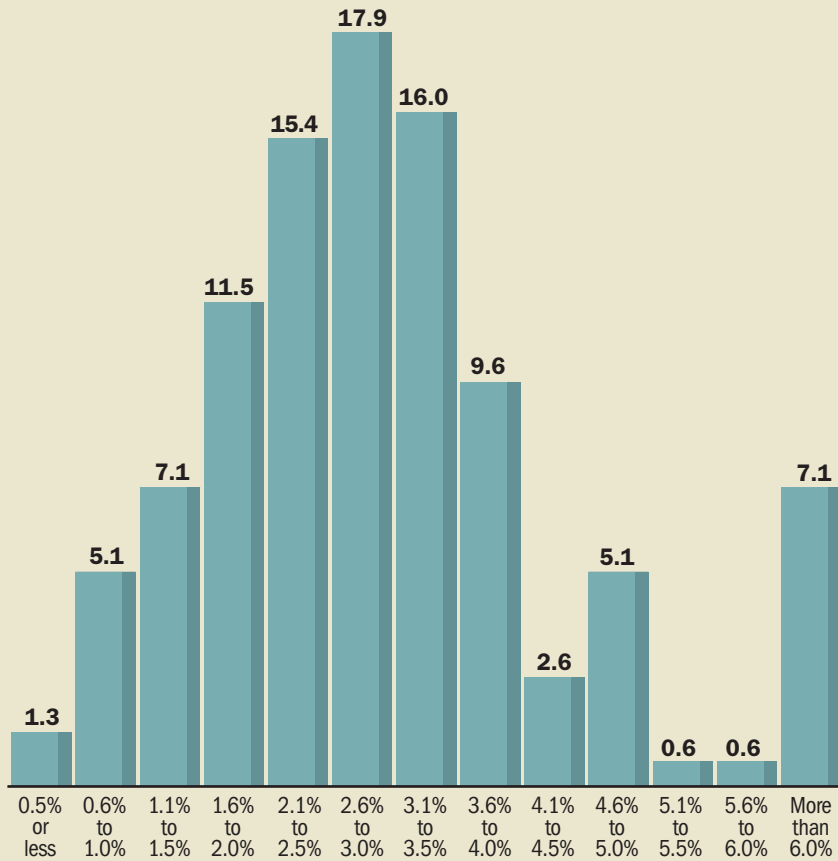
Source: Modern Healthcare/Modern Physician's 19th annual Survey of Executive Opinions on Key Information Technology Issues

Modern Healthcare

2009 SURVEY OF EXECUTIVE OPINIONS ON KEY I.T. ISSUES

PERCENTAGE OF ORGANIZATION'S TOTAL OPERATING BUDGET ALLOCATED FOR INFORMATION SYSTEMS

Percentage of respondents selecting each range



Note: Total does not equal 100% because of rounding.

Source: Modern Healthcare/Modern Physician's 19th annual Survey of Executive Opinions on Key Information Technology Issues