

Socioeconomic Determinants of Adult Mortality in Namibia Using an Event History Analysis

Alina Kandjimi, Ndeyapo Nickanor and Lawrence N. Kazembe

APPENDIX: SUPPLEMENTARY INFORMATION

Kaplan–Meier curves of adult survival by socioeconomic (Figure A1), demographic (Figure A2) and healthcare (Figure A3) factors

Figure A1. Survival curves of adults and old age people with respect to socioeconomic variables: (a) marital status, (b) education, (c) rural/urban, (d) wealth quintiles, as provided in Table 1.

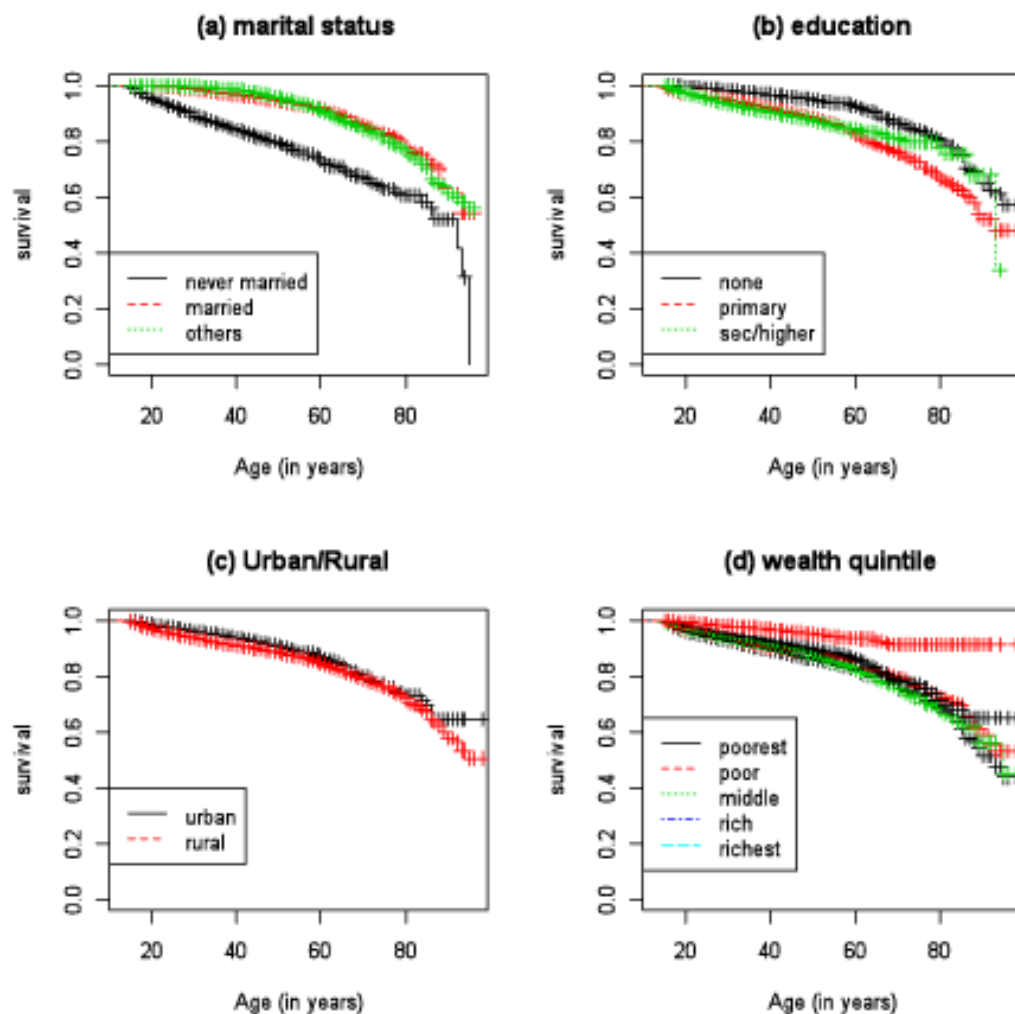


Figure A2. Survival curves of adults and old age people with respect to demographic variables: (a) sex of household member, and (b) sex of household head, as provided in Table 1

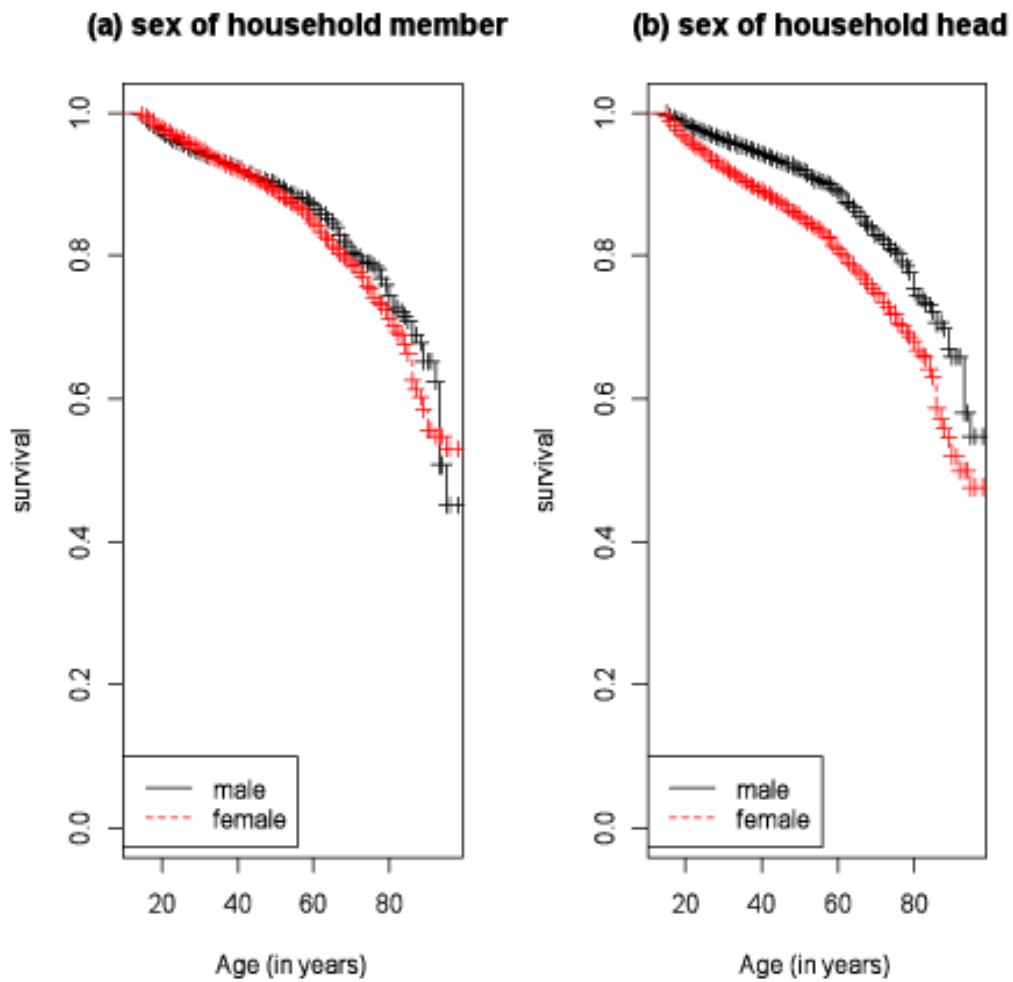
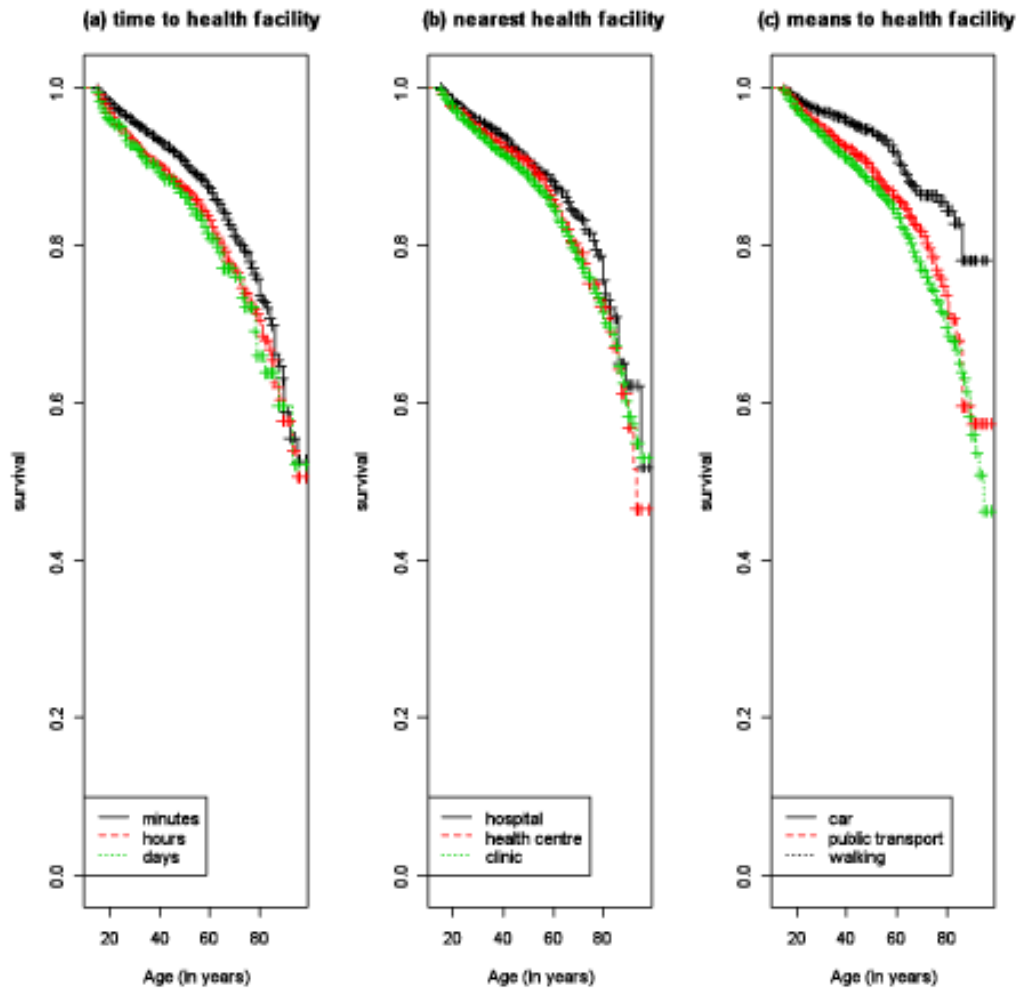


Figure A3. Survival for adult and old age people in terms of healthcare variables: (a) time to health facility, (b) nearest health facility, (c) means to health facility, as described in Table 1



Socioeconomic Determinants of Adult Mortality in Namibia Using an Event History Analysis

Table A1. Log-rank test summaries for survival curves plotted in Figure A1–A3v

Covariates	Log-rank test	p^*
Marital status of household member	1050.4	0.00
Education of household member	181.5	0.00
Residence	10.5	0.00
Wealth index	143	0.00
Sex of household head	11.2	0.00
Sex of household member	3.8	0.11
Nearest health facility	1.9	0.38
Means to nearest hospital	100.1	0.00
Time to nearest health facility	18.6	0.00

Note: *Test was carried out at $p < 0.05$.