



27" FANCY PARIAN DOLL

Head is 6"H. Light brown hair has fancy curls with two molded bands and a chignon in back, pierced ears and nicely painted features. Sawdust stuffed body with new limbs, partially dressed. Head is repaired. Her silk skirt is melting and disintegrating



The larger doll is a 23" Bisque socket head. A.M. 390 with sleeping eyes, bobbed human hair wig, early jointed composition and wood body (hands repainted), lovely antique cotton white dress with lace trim and slip, wool coat and hat, great black leather shoes.

The smaller doll is an A.M. 1894 with pale early bisque, blue sleeping eyes, open mouth, on a 5-piece toddler body. Cute blue romper.



SFBJ French Bisque Child Doll.
Mold 60, brown sleeping eyes,
painted eyelashes, multi-stroked
eyebrows, open mouth with
upper teeth, replaced wig, French
jointed composition and wood
body (repainted lower legs,
replaced hands), taffeta dress. 23"
Tall. Nice silk dress.



French Bisque B b  Doll.

DEP (Jumeau), replaced eyes, molded eyebrows, open mouth with teeth, pierced ears, French jointed composition and wood body (repainted hands), cream silk dress looks vintage. 24" Tall.



All Wood Schoenhut Dolls.
Both all-wood spring-jointed bodies with Schoenhut decal on back. 22" "Miss Dolly" with original face paint (nose rub, a few light crazing lines), brown decal eyes (a few small paint chips), and painted upper and lower eyelashes, open/closed mouth with molded teeth, replaced mohair wig, beautifully redressed with underwear, hat, stockings and antique shoes.

Baby-faced toddler, original paint (4 face chips,) painted eyes, replaced human hair wig, redressed



Lovely German Bisque Alt, Beck & Gottschalck Doll - 21" tall.
Bald turned early pale bisque shoulder head (extensive repair to front shoulder plate), blue glass eyes, closed mouth with lip shading line, replaced blonde mohair wig, newer cloth body with lovely antique bisque lower arms and legs, original ivory satin and velvet gown with long train (much deterioration to satin on gown).



Floradora Turn-of-the-Century German Doll (#12)

Marked "Floradora."

Number on it looks like A3/om. Has glass sleep eyes that work, an open mouth, leather body, and jointed wood arms and legs.

SFBJ Bisque Child Doll. (#6)

Bisque socket head incised SFBJ 301 Paris (small piece of bisque missing at rim), blue glass eyes, open mouth with teeth, pierced ears, replaced dark wig, French composition and wood body (peeling hands and lower arm), redressed.



Jumeau French Bisque Bébé Doll.

DEP mark, blue sleeping eyes, molded eyebrows, pierced ears, open mouth with teeth, new mohair wig, jointed composition and wood French body (repainted). 20" Tall

French Bisque Unis Child Doll with Flirty Eyes. . 24" tall

Bisque head incised "Unis France 301" (a few wig pulls), blue flirty eyes with painted lower eyelashes, open mouth with upper teeth, original brown human hair wig. French jointed composition and wood body.



AM baby (#20) Small porcelain doll with sleepy eyes and the letters AM marked on the neck. Size: 11"bGC, damage to hands and minor paint loss
#19 is missing the eyes and wig.
#21 bisque head sleep eyes about 10" tall.
#22 beautiful painted bisque head souvenir doll. Lovely costume.



5 German China Shoulder Head Dolls.

All have 1890s hairdos and have old cloth bodies and limbs (1 has a broken foot and 1 has 2 broken feet). 1 has a rare molded necklace with green "gem" stone, and one has a rare original colorful printed cloth body with flowers and their names. Various states of clothing. Largest: 14" Tall



18" tall AM 390
Ball jointed composition body.
Replaced Red hair wig.
Lovely old dress with sequins
down the front



Bisque head First Nations doll with toboggan and birch bark canoe. Back of head marked CL&S in triangle. 8" tall. No wig.

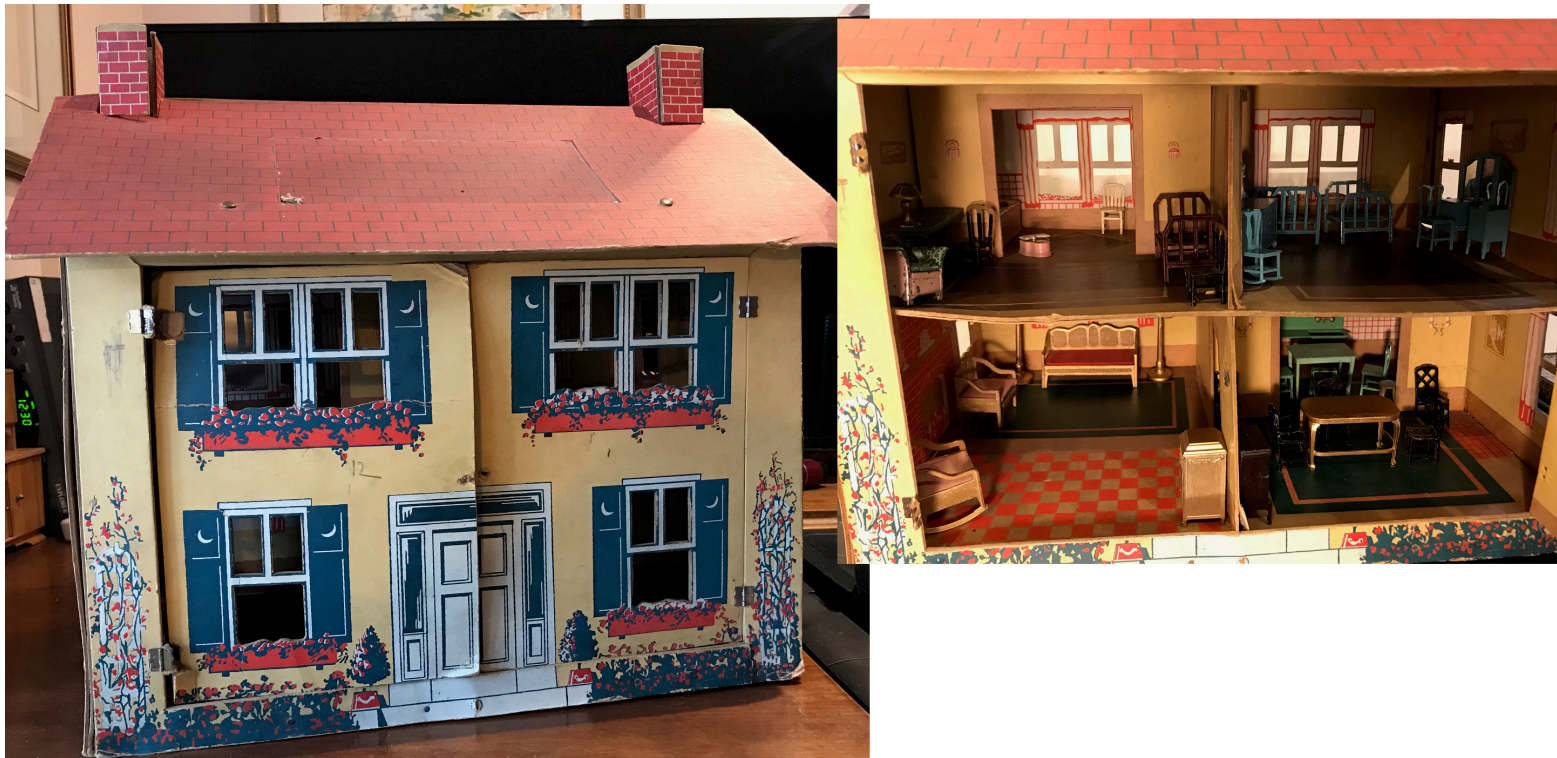
Two china head dolls, the small one has an arm coming off. The large one has an unusual hairstyle



Three small German dolls. The boy is 10" tall and has fixed eyes. The girls have eyes that close and are on very light bodies. The flapper is missing her wig.



Converse Litho Stamped Wooden Doll House on the left and a Bliss on the right. The Bliss house may not have original paper coverings. Both houses about 12" tall. Both American made circa 1910.



Tootsietoy dollhouse with Toosietoy furniture from 1927. American made