



## Quarterly Index

# Discharge Planning Varies by Hospital Type

Many hospitals across Canada have programs to facilitate appropriate early discharge of patients as part of comprehensive utilization management strategies. The likelihood that patients will have their discharges planned by a designated officer, however, varies considerably by hospital type, according to data from the 1996/97 Discharge Abstract Database (DAD) managed by the Canadian Institute for Health Information (CIHI).

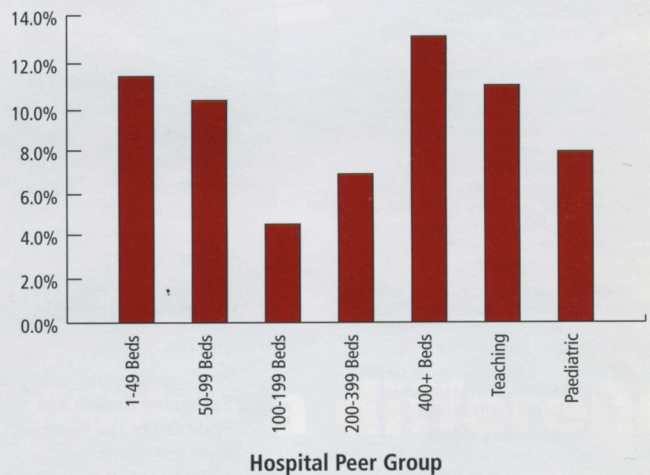
In Ontario (the only province for which reporting of these data is mandatory), 8.7% of patients discharged from acute care facilities received this service, compared with 13.2% for psychiatric facilities and 23% for general and special rehabilitation facilities.

**Note:** Statistics exclude deaths, stillbirths, and sign-outs. Furthermore, these data indicate whether a discharge was planned by a designated officer. Other patients may receive similar services from someone other than a designated officer.

### Planning Ahead

Acute care patients in large community hospitals are most likely to have their discharges planned by a designated officer.


- Source: CIHI DAD, Ontario, 1996/97.



### DID YOU KNOW?

- The Institute of Clinical Evaluative Sciences (ICES) has published information on discharge planning strategies based on the findings of a multi-year research study. For more information, see the ICES web site at [www.ices.on.ca/docs/macro1.htm](http://www.ices.on.ca/docs/macro1.htm).
- 'Practice Guidelines' was officially introduced as a Medical

Subject Heading (MeSH) by the National Library of Medicine in 1993. By July 20, 1998, there were 5187 citations in MEDLINE, a database of more than 9 million references to articles published in 3900 biomedical journals, under this term. Medline can now be accessed at [www.ncbi.nlm.nih.gov/PubMed/](http://www.ncbi.nlm.nih.gov/PubMed/) (Source: PubMed, National Library of Medicine)

 The Quarterly Index is produced by the Canadian Institute for Health Information (CIHI). For information about CIHI, please visit its website at [www.cihi.ca](http://www.cihi.ca). For more information regarding these statistics, please contact Jennifer Zelmer at (416) 429-0464 or via email at [jzelmer@cihi.ca](mailto:jzelmer@cihi.ca).

